

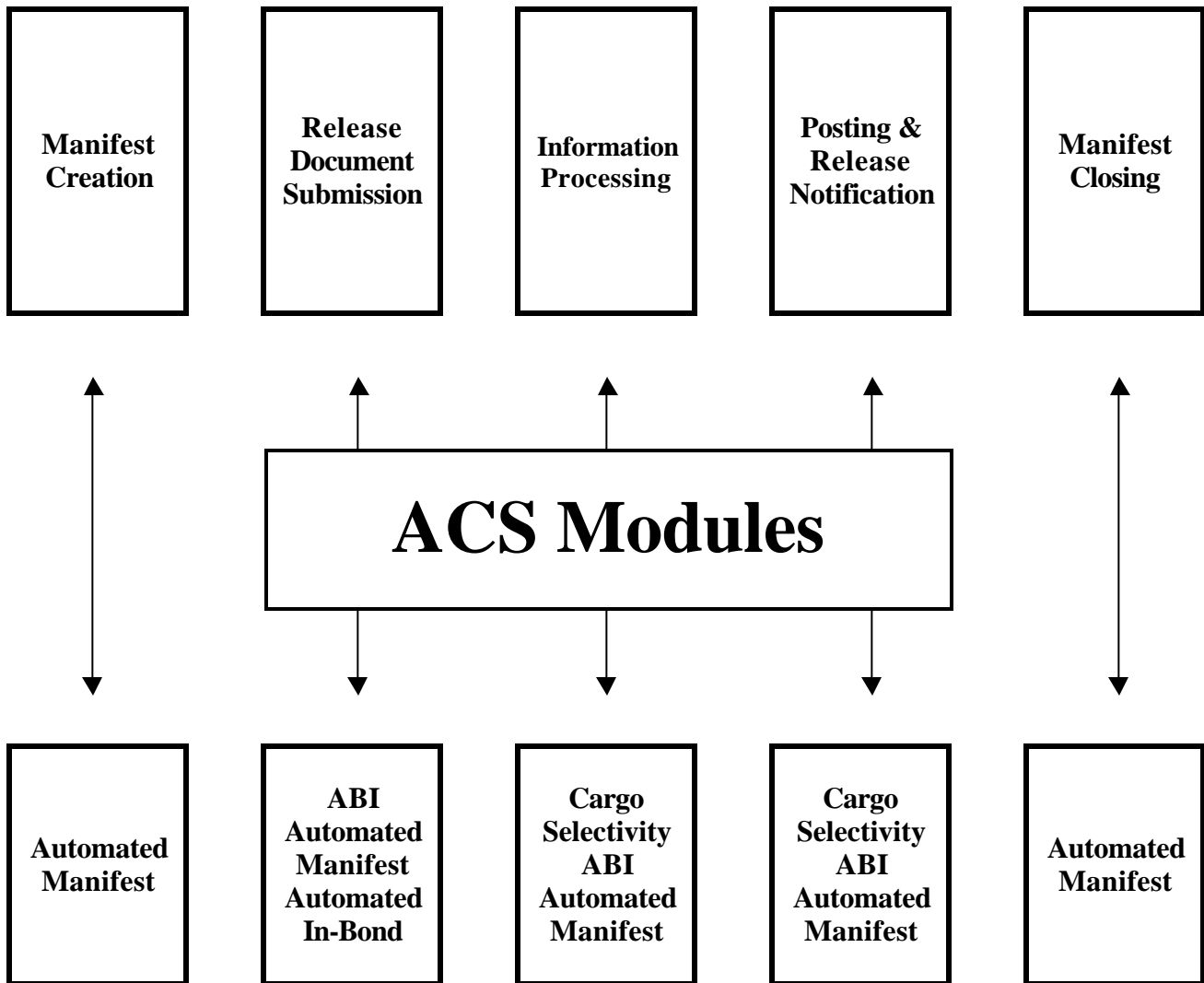
Program Flow

The flow charts in this chapter display the major Automated Commercial System (ACS) program segments interacting with Automated Manifest System (AMS) and the data flow pathway through AMS.

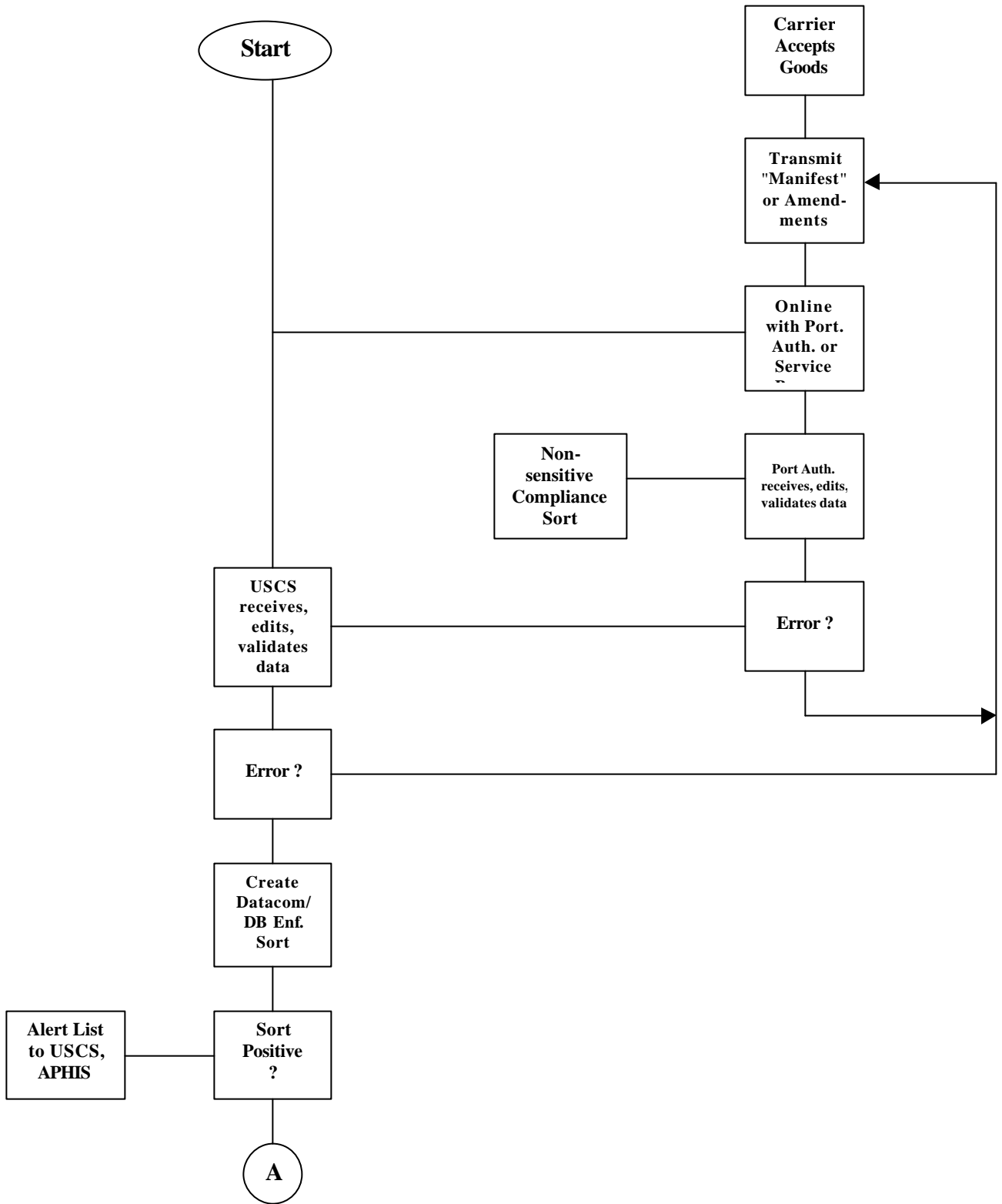
The Customs manifest system is designed to accept automated manifest data, including amendments, from carriers, port authorities, or service bureaus. Customs transmits Release, Hold and General Order (G.O.) information to the appropriate parties and informs them when the bill of lading is reconciled.

The U.S. Customs Service sees the AMS as a means of speeding the flow of cargo through an electronic release notification system and reducing paperwork for both carriers and Customs by eliminating the paper manifest, and decreasing the number of discrepancy reports, MDR: Manifest Discrepancy Reports, and in-bond document (CF-7512) which are required. Importers, brokers, carriers, port authorities, service bureaus, U.S. Department of Agriculture, and Customs should all benefit from greater control, better communication, and a shorter dwell time for imported cargo.

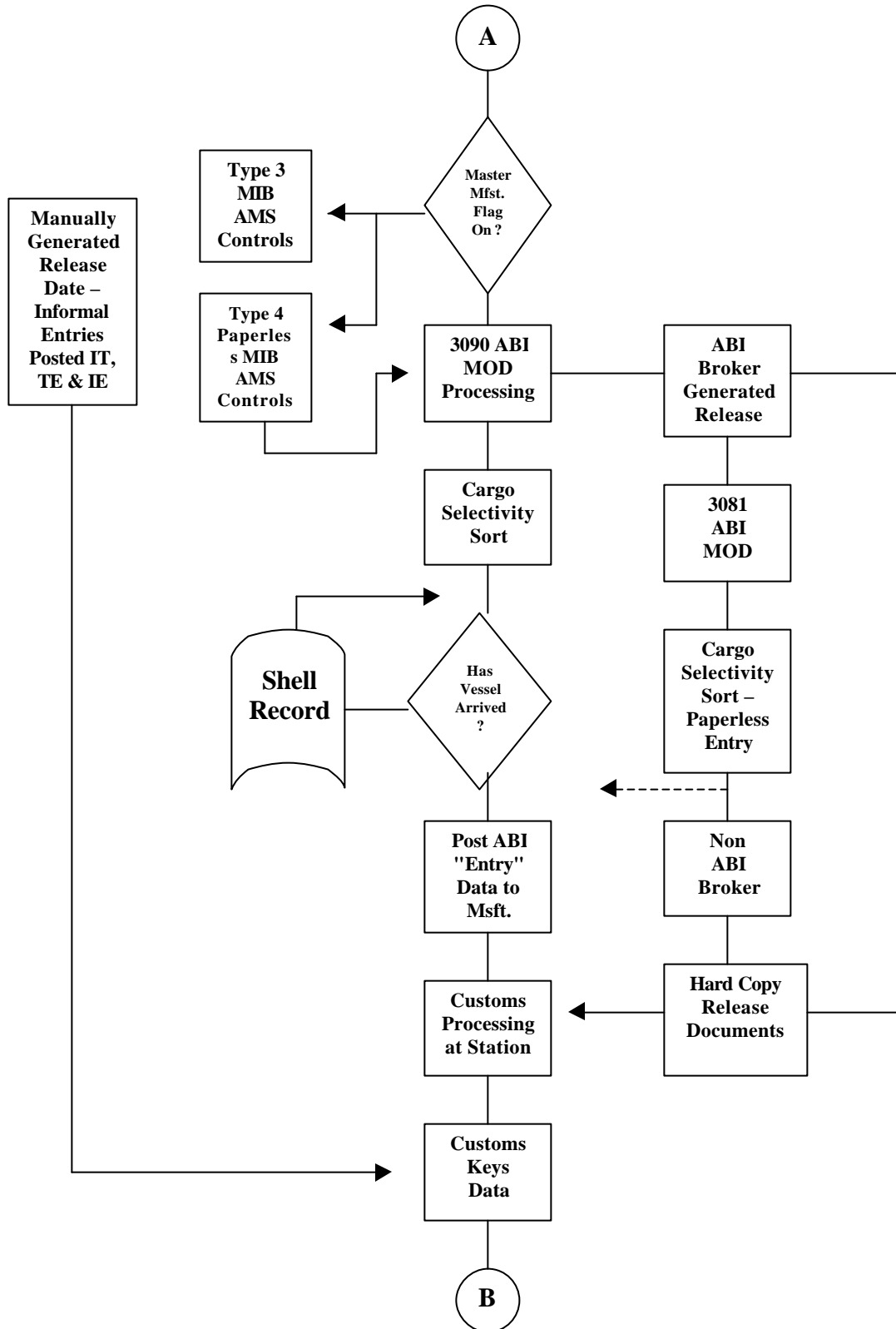
Basic AMS Processing Segments



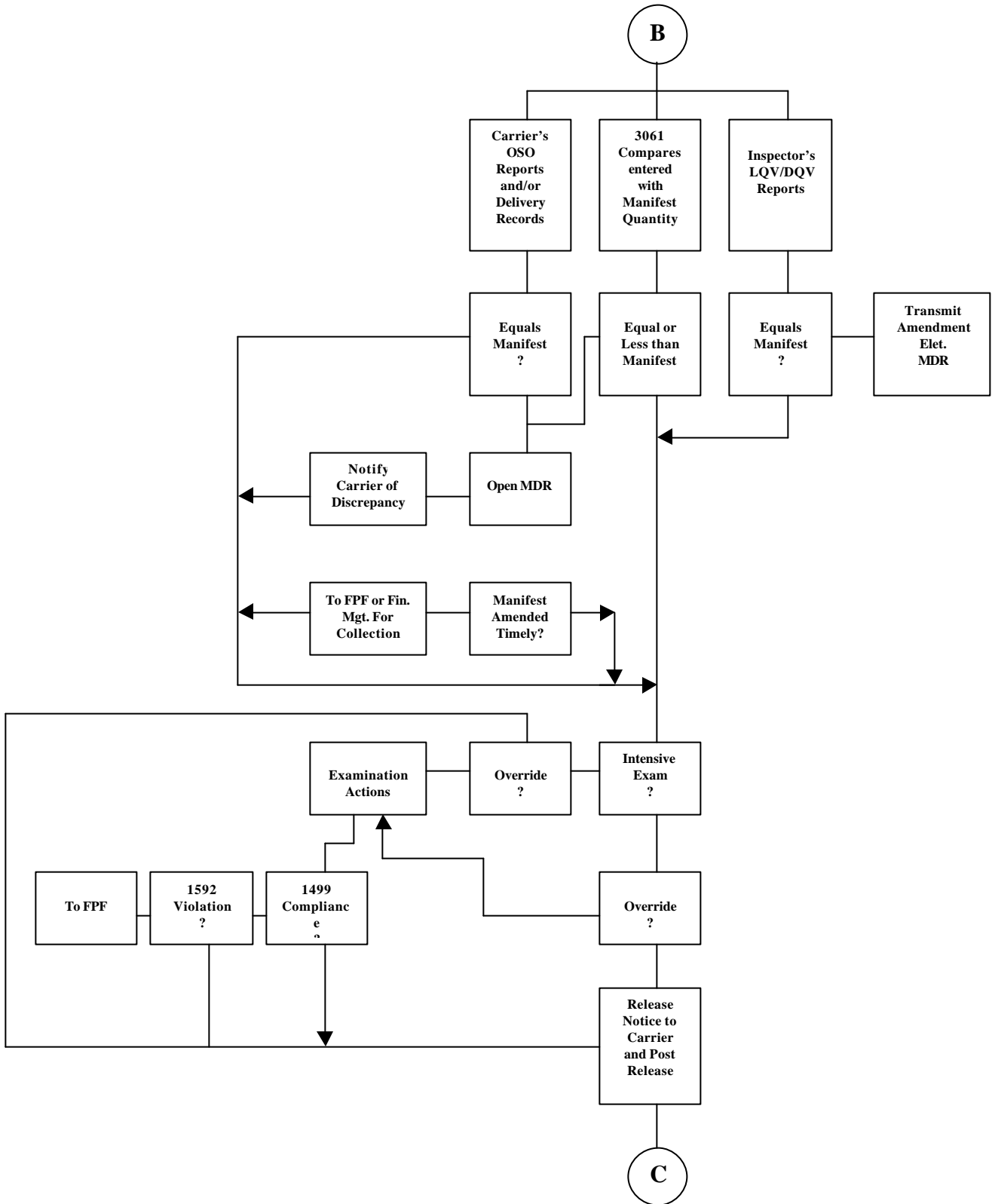
Cargo Processing and Data Flow within AMS



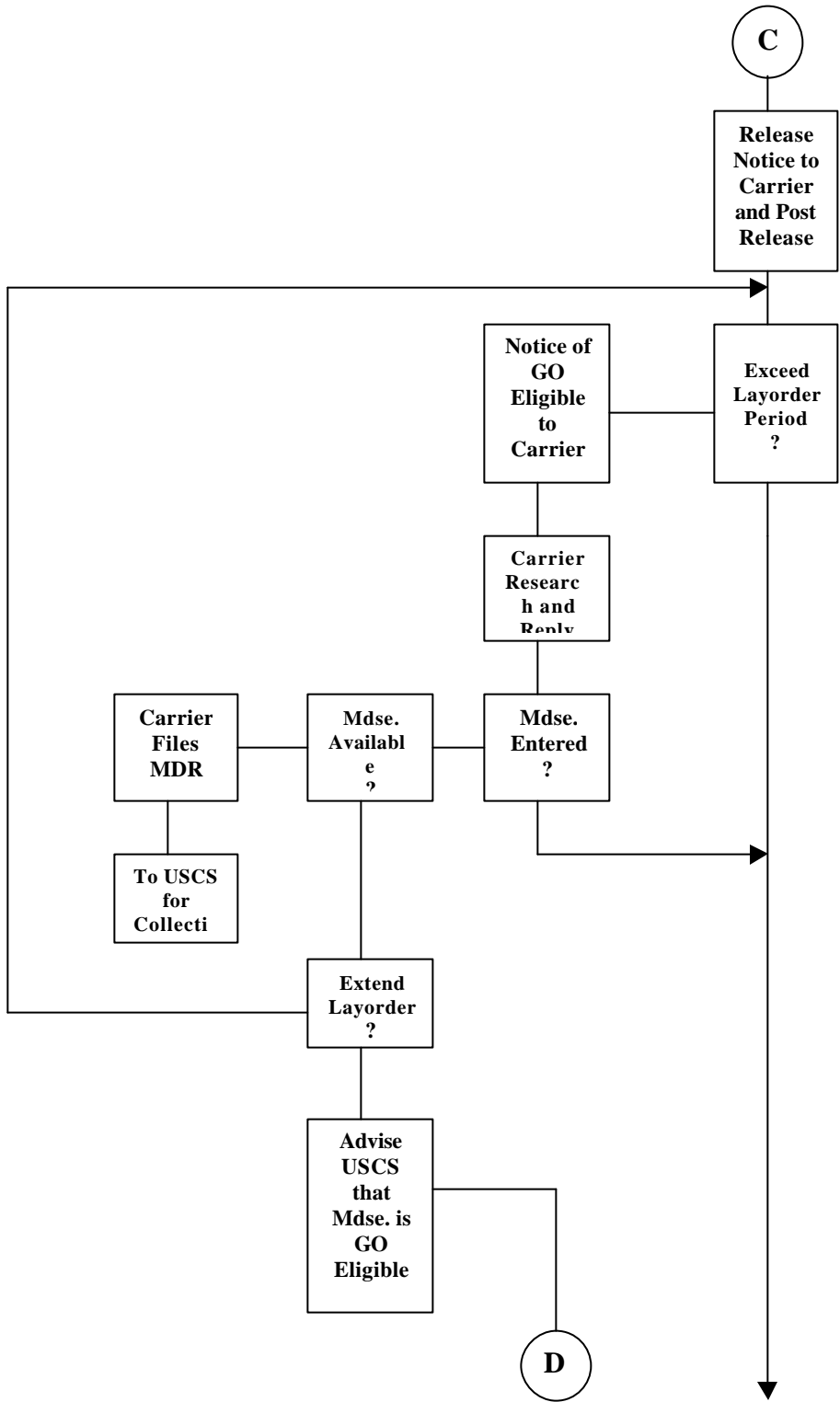
Cargo Processing and Data Flow within AMS (continued)



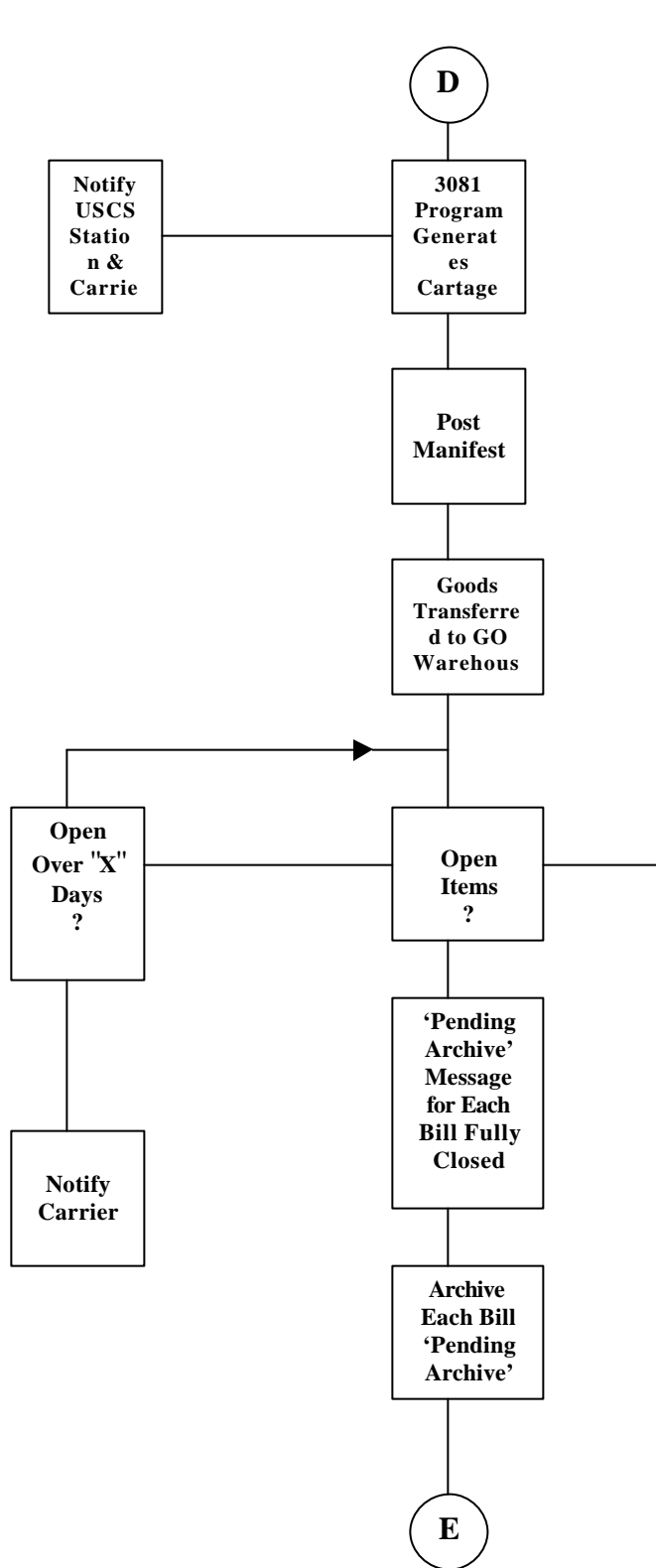
Cargo Processing and Data Flow within AMS *(continued)*



Cargo Processing and Data Flow within AMS (continued)



Cargo Processing and Data Flow within AMS *(continued)*



Cargo Processing and Data Flow within AMS *(continued)*

